

QUALITY COLORS.

Case Study

Townhouse London

X BAYFERROX®
Color for Life.

X COLORTHERM®
Color for Life.

COLORED CONCRETE WORKS®
An initiative of LANXESS

QUALITY WORKS.

LANXESS
Energizing Chemistry

EXPERIMENTAL RENOVATION OF A VICTORIAN HOUSE

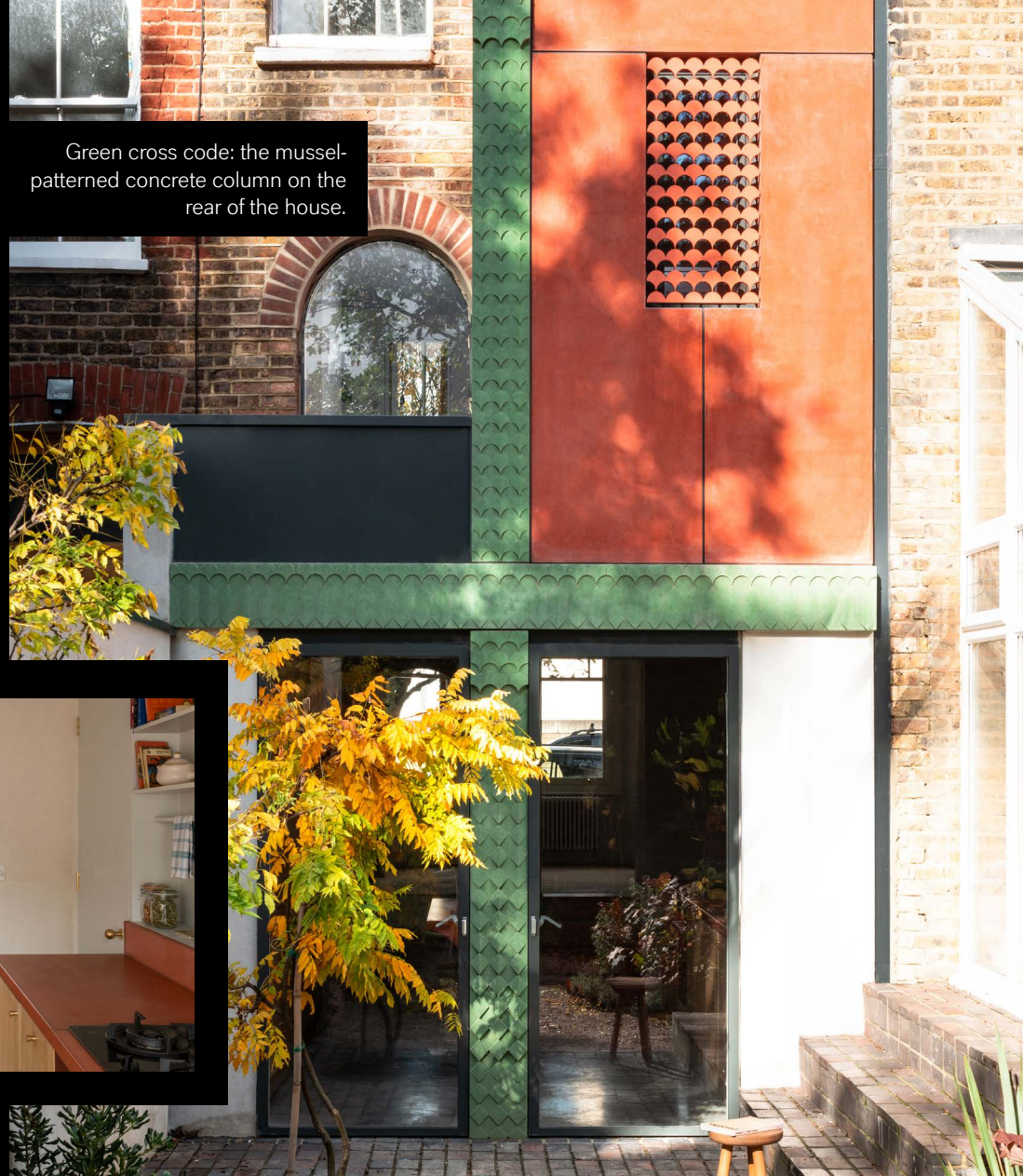
In London, an old Victorian house is becoming an experimental wonderland of coloured concrete.

The architectural firm Studio Ben Allen is experimenting with colourful concrete in the redesign of the crumbling rear facade in order to create load-bearing walls and decorative details – and all at top speed with prefabricated elements.

Inspired by the surrounding Victorian

architecture, concrete is used in various ways throughout the renovated house, including for the moss green patterned columns and beams which support the salmon pink textured wall panels of the bathroom on the first floor.

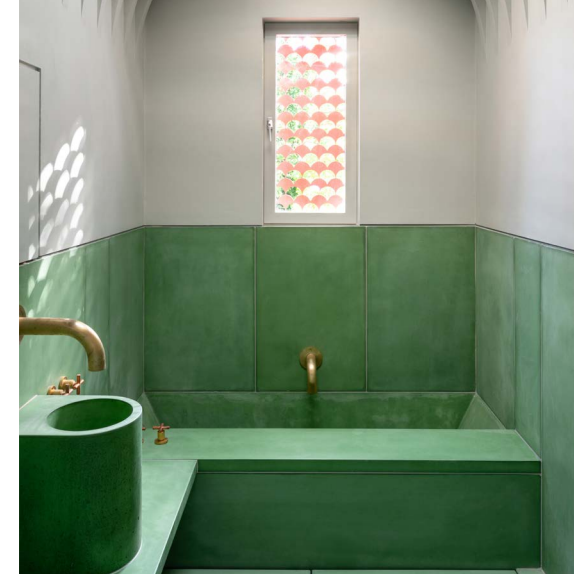
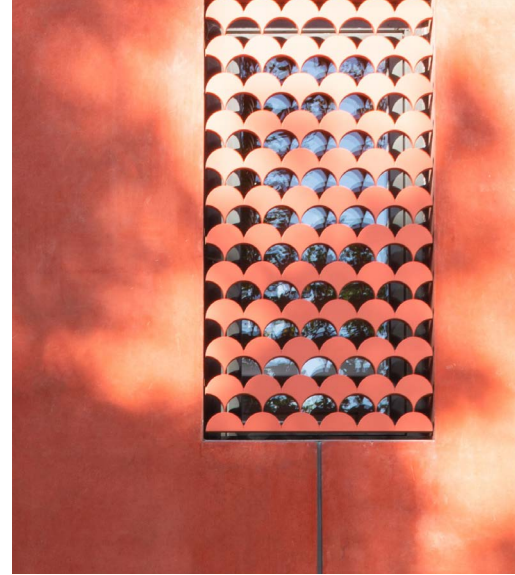
The gaze is concentrated on the garden, while multiple light shafts ensure plenty of light in the rooms.



Green cross code: the mussel-patterned concrete column on the rear of the house.



In the interior of the enlarged and renovated kitchen, the green texture contrasts with the counters, the sink and the kitchen island.



PUSHING THE BOUNDARIES OF CONCRETE – COLOURED AND TEXTURED ELEMENTS

Textured concrete is used innovatively – not just as a supporting structure or architectural finishing, but as a combination of both.

The entire update – including stairs, counters, sinks, floors, benches, bathtub and basin – is cast in pigment-ed concrete. The kitchen counters were designed in a red hue. The bathtub, the counters, the basin and the benches in the bathroom on the top floor are all made from green concrete – creating an atmosphere similar to

a hammam in the room. Brass fittings complement the concrete perfectly.

Iron oxide and chromium oxide pigments from LANX-ESS were used to colour the various concrete parts all the way through. This process requires expertise in the interaction between the concrete technology and the colour pigment used. The experts at LANXESS supported the planners right from the outset with their essential technical and application know-how.

Iron oxide and chromium oxide pigments were used in order to give the concrete elements a modern, Victorian-inspired appearance.



[CLICK HERE](#)

A WONDERLAND OF COLOURED CONCRETE – VOTED THE BEST HOUSE RENOVATION

As the overall winner of “Best new house renovation”, the project was honoured with the “Don't Move, Improve!” award in 2021.

This award is organised annually by New London Architecture (NLA) in order to present the diversity of the houses in the British capital. And it is unlikely to be the last award that the spectacular house wins.

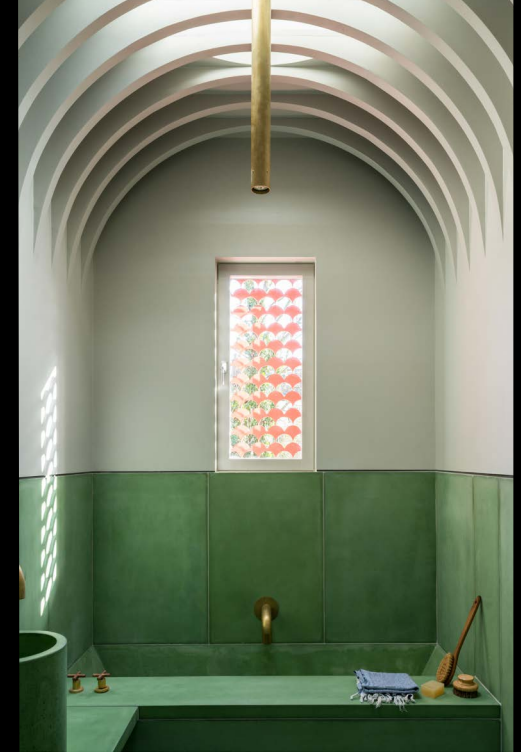
The architects used the project for new ideas such as the innovative use of textured and coloured concrete both as the supporting structure and architectural finishing. In order to demonstrate how off-site construction

can also be beneficial for smaller residential projects, several elements were prefabricated in order to reduce the construction time on site.

**DON'T
MOVE
IMPROVE!**



Diffuse light penetrates into both the kitchen and the bathroom thanks to grid pattern vaulted ceilings.



Additional openings allow the light to penetrate deep into the house and at the same time create visual and acoustic connections



PROJECT FIGURES

LOCATION

Haringey (North-London)

ARCHITECT

Studio Ben Allen, London E2 9AP, UK
www.studiobenallen.com

CONSTRUCTION YEAR

2020

BUILDER AND OWNER

Russell Vandyk and Alan Martin Day

PIGMENTS

X BAYFERROX®
Color for Life.

X COLORTHERM®
Color for Life.

BAYFERROX®110
in white cement



COLORTHERM®GN
in white cement



LOOKING FOR TECHNICAL ADVICE?

Top-level technical service

As a technological leader in the field of synthetic iron oxide and chrome oxide pigments, LANXESS as the sole provider disposes of a global network of technical service centers with which we can provide support to our customers on every topic regarding the use of our inorganic pigments.

The service portfolio includes a wide range of specific testing and consultation services.



LANXESS specialists test the feasibility of customer requests under realistic conditions in fully equipped laboratories. They provide information about optimal pigment selection and processing in various application

systems and provide cause analysis in the event of problems. We consider ourselves to be a service provider that offers its customers tailor-made pigment solutions and advice of the highest quality.

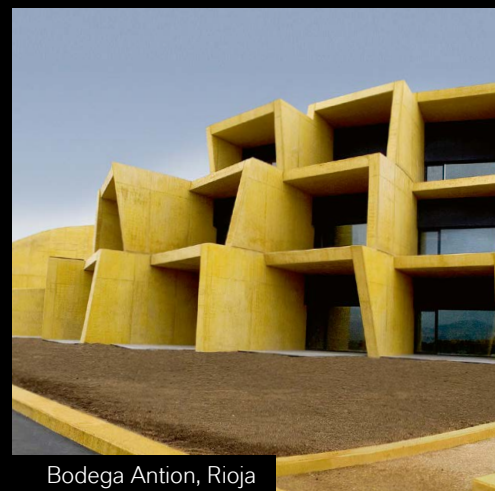


[CLICK HERE](#)

Get in touch with us.

X COLORTHERM®
Color for Life.

X BAYFERROX®
Color for Life.



Bodega Antion, Rioja



Ciudad de la Justicia, Barcelona



LANXESS Deutschland GmbH
Business Unit Inorganic Pigments
Rheinuferstraße 7–9
47829 Krefeld
Germany

www.bayferrox.com
www.colored-concrete-works.com

Health and Safety Information

Appropriate literature has been assembled which provides information concerning the health and safety precautions that must be observed when handling the LANXESS products mentioned in this publication. For materials mentioned which are not LANXESS products, appropriate industrial hygiene and other safety precautions recommended by their manufacturers should be followed. Before working with any of these products, you must read and become familiar with the available information on their hazards, proper use and handling. This cannot be overemphasized. Information is available in several forms, e.g. material safety data sheets, product information and product labels. Consult your LANXESS representative in Germany, or contact the Regulatory Affairs and Product Safety Department of LANXESS Germany or – for business in the USA – the LANXESS Regulatory Affairs and Product Safety Department in Pittsburgh, Pennsylvania.

Regulatory Compliance Information

Some of the end uses of the products described in this publication must comply with applicable regulations, such as those of the FDA, BfR, NSF, USDA and CPSC. If you have any questions on the regulatory status of these products, please consult your LANXESS representative in Germany, or contact the Regulatory Affairs and Product Safety Department of LANXESS Germany or – for business in the USA – your LANXESS Corporation representative, the LANXESS Regulatory Affairs Manager in Pittsburgh, Pennsylvania. The manner in which you use and the purpose to which you put and utilize our products, technical assistance and information (whether verbal, written or by way of production evaluations), including any suggested formulations and recommendations, are beyond our control. The same applies to suggested formulations and recommendations. Therefore, it is imperative that you test our products, technical assistance and information to determine to your own satisfaction whether they are suitable for your intended uses and applications. This application-specific analysis must at least include testing to determine suitability from a technical as well as a health, safety and environmental standpoint. Such testing has not necessarily been done by us. Unless we otherwise agree in writing, all products are sold strictly pursuant to the terms of our General Conditions of Sale and Delivery. All information and technical assistance is given without guarantee and is subject to change without notice. It is expressly understood and agreed that you assume and hereby expressly release us from all liability, in tort, contract or otherwise, incurred in connection with the use of our products, technical assistance and information. Any statement or recommendation not contained in this brochure is unauthorized and shall not bind us. Nothing herein shall be construed as a recommendation to use any product in conflict with industrial property rights such as patents covering any material or its use. No license is implied or in fact granted under the claims of industrial property rights such as patents.

Copyrights of all images by French + Tye.